

# How to safely hold a common snapping turtle

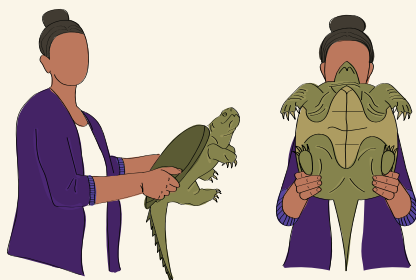
Presented by Turtle Guardians

Turtles must cross roads to get to different parts of their territories. If a turtle is not nesting and wanting to travel, help them cross the road in the direction they are headed when it is safe to do so.\*

**Below are 3 different ways to safely hold a turtle.**

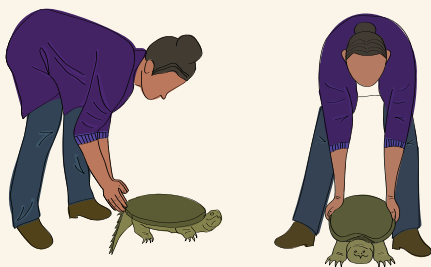
## 1 The Ledge

The back of the shell above the tail makes a nice shelf that you can grab with your hands.



## 2 The Wheelbarrow

Grab the shelf and lift the back end of the turtle off the ground. Let the turtle walk with their front feet while you guide them.



\* There is an exception to this rule in eastern North America during nesting season in May and June. A majority of the time, turtles—especially snapping turtles—do a U-turn back to the water behind them.

# How to safely hold a common snapping turtle

Presented by Turtle Guardians

## 3 The Waitress Tray

Place one hand under the shelf. From the back beside the tail, slide the other hand under the belly, holding the turtle's plastron (underside of the shell).



## X Never pick up a turtle by the tail

A turtle's tail is part of their spine. Picking them up by the tail can lead to permanent spinal injuries that may threaten their survival.

**Need help?** Text or call our  
Turtle Guardians hotline at 705-854-2888



**Turtle Guardians**